

Introduction

The N'Vision Model 8840 Clinician Programmer (Figure 1) with the Model 8870 Application Card is a hand-held device for programming Medtronic devices for Medtronic Neurological therapies. The programmer is used to review and program pump parameters using telemetry, a radio-frequency (RF) communication. The programmer is also used to set limits for patient control devices (if applicable).

If using a programmer for the first time, refer to the setup instructions on the Getting Started card that is packaged with the programmer.

Programmer components

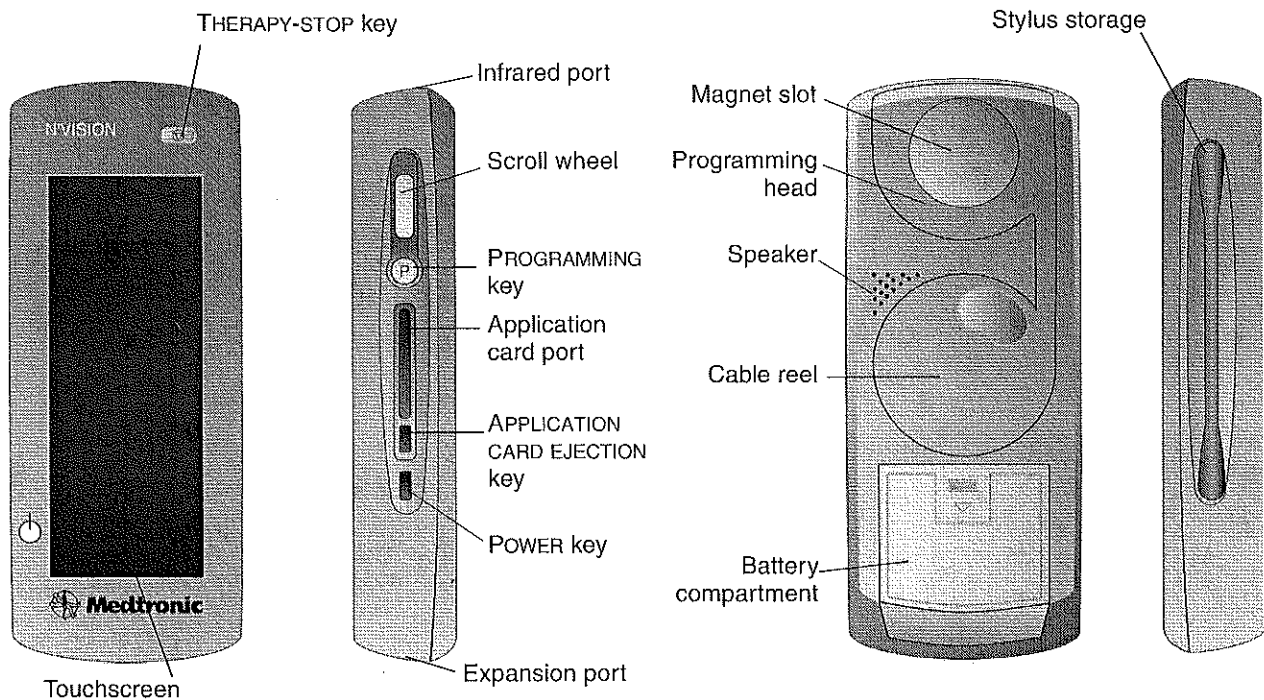


Figure 1. N'Vision clinician programmer components.





Caution: Do not use the expansion port. The expansion port is a testing port used by Medtronic personnel. Connecting any equipment to this port may damage the programmer.

- **Therapy-stop key** (⏏) —Stops all active therapy
- **Touchscreen** —Programmer touchscreen for display and data input
- **Infrared (IR) port**—Allows communication with compatible printers or devices
- **Programming key** (P) —Depressing the key initiates interrogation or programming
- **Application card port**—Slot for the application card
- **Application card ejection key**—Ejects the application card from the programmer
- **Power key** (⏻) —Turns the programmer on and off; reactivates the programmer after Stand-by mode
- **Expansion port**—Do not use; currently only used for Medtronic testing
- **Magnet slot**—Holds the Model 8529 Magnet (the Model 8529 Magnet is not used for all therapies and devices)
- **Programming head**—Allows the programmer to communicate with the device
- **Cable reel**—Stores a 1-meter extendable cable that connects the programming head to the programmer
- **Speaker**—Programmer speaker
- **Battery compartment**—Contains the programmer batteries
- **Stylus**—Use to enter data through the touchscreen

Exiting the application

◆ *To exit the application*

1. Do one of the following:
 - Select the EXIT button () from the title bar.
 - Select the slider bar, then select the EXIT APPLICATION button().
2. When the dialog box appears confirming the request to exit the application, select the OK button to exit the application or select the CANCEL button to return to the programming session.

Performing a Therapy Stop

Therapy Stop cancels any infusion in progress and changes the infusion mode to Minimum Rate mode. The current date and time are recorded as the Date/Time Last Programmed parameter stored in pump memory.



Cautions:

- Therapy Stop does not stop drug delivery. Therapy Stop changes the infusion mode to Minimum Rate mode. To stop drug delivery, use Stopped Pump mode. To prevent damage to the pump, do not stop drug delivery for more than 48 hours.
- For the Therapy Stop function to operate, ensure the application card is inserted and the therapy is selected.

Therapy Stop is active only when the DRUG DELIVERY DESKTOP screen is displayed. If the THERAPY STOP key is pressed while programming pump settings, a dialog box appears stating Therapy Stop is unavailable and Minimum Rate mode must be used. The pump must be reprogrammed with the Minimum Rate mode, or the program must be exited to access the DRUG DELIVERY DESKTOP screen and use the THERAPY STOP key.




Warning: Do not send a patient home if:

- there is a pump memory error.
- there is an unresolved alarm condition.
- telemetry was canceled or interrupted during pump update (eg, the programmer was turned off before telemetry was completed).
- pump status was not confirmed.

Failure to correct pump memory errors, alarm conditions, or incomplete telemetry can result in incorrect or incomplete programming, unknown or unexpected pump status (including a stopped pump), and a clinically significant or fatal drug underdose or overdose.

◆ **To perform a therapy stop**

1. Turn the programmer ON.
2. Navigate to the DRUG DELIVERY DESKTOP screen by selecting the PUMP APPLICATION button () from the APPLICATION SELECTION screen (Figure 57).

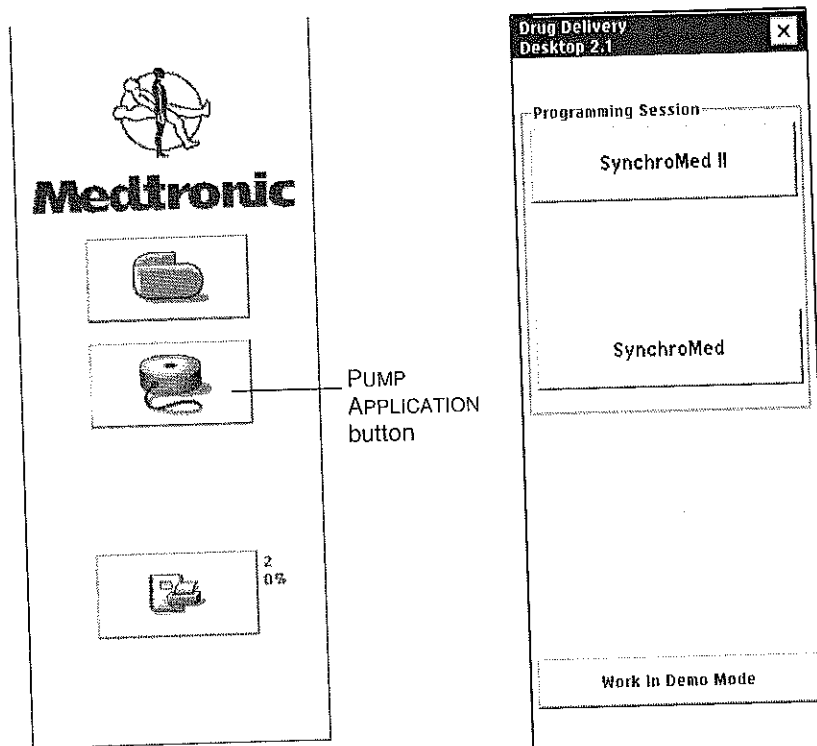


Figure 57. APPLICATION SELECTION and DRUG DELIVERY DESKTOP screens.

3. Press the red THERAPY STOP key () on the programmer.

4. When the Therapy Stop dialog box appears, select the SYNCHROMED II button to continue (Figure 58).

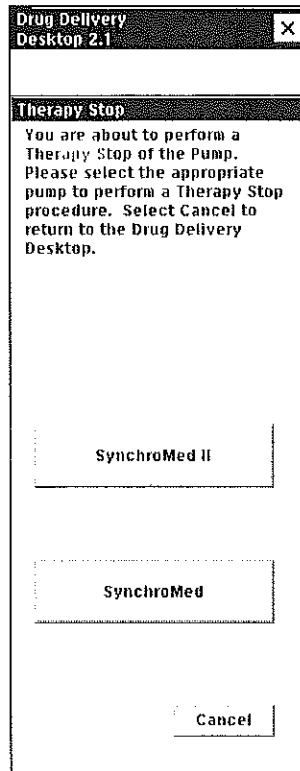


Figure 58. Selecting a pump for Therapy Stop.

5. When the Therapy Stop Interrogate Pump dialog box appears, position the programming head over the pump.
6. Hold the programming head steady over the pump, then press the PROGRAMMING key or select the OK button.
7. If the programming head is extended, a status light is visible on the back of the programming head:
 - **Green light flashing**—Telemetry is successful
 - **Amber light flashing**—Telemetry is unsuccessful
8. Once telemetry is successfully completed, the Telemetry Complete message appears.

9. Select the OK button. A message appears (Figure 59).

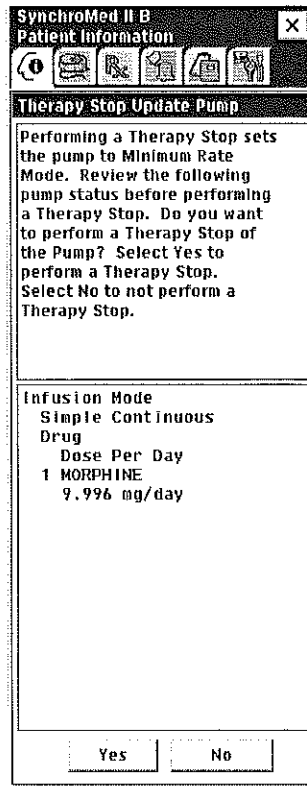


Figure 59. Therapy Stop Update Pump dialog box.

10. Select the YES button to perform Therapy Stop.


Reading serial numbers

◆ *To read the pump serial number*

Interrogate the pump, and read the pump serial number from the PUMP STATUS screen or from the PUMP AND CATHETER screen.

◆ *To read the clinician programmer serial number*

Do one of the following:

- Remove the battery compartment cover and batteries (refer to “Changing the programmer batteries” on page 90), and read the serial number located inside the battery compartment.
- Select the INFORMATION button () from the slider bar, and read the serial number located next to the programmer icon.